

OroGrande Resources Inc.

Suite 926, 1122 Fourth Street SW

Calgary, Alberta T2R-1M1

Ph: (403)-233-2964 FAX: (403)-264-0057

Gold and Copper Exploration in Jamaica

The Bellas Gate concessions were acquired by OroGrande Resources Inc. ("ORG") in 1991 and comprise of three contiguous exploration licences covering an area of 42.4 square miles (Fig. ALB-1). Situated approximately 40 miles northwest of Kingston, our claims protect a large part of the Central Inlier, an area of Cretaceous volcanic and sedimentary rocks, within which the Island's historical copper mining started in the 1850's.

Geologically, the island of Jamaica is part of the tectonically active Greater Antilles Island Arc environment. The large Pueblo Viejo epithermal gold deposit in the Dominican Republic and the recent discoveries in Cuba, all part of this Island Arc, confirm its potential.

In 1988, a CIDA-sponsored stream sediment program defined nine priority ONE anomalies for gold and copper in ORG's Bellas Gate concessions (Figures ALB-1, ALB-2 and ALB-3) and confirmed a close relationship between copper and gold. BHP-Utah, following up on this work, staked the Main Ridge gold deposit, also a priority ONE anomaly, about ten miles west of our Bellas Gate concessions. This deposit is going into production under the auspices of Orvana Minerals Corp. and a private group of investors.

Although at least 32 copper and gold showings have been identified on the Company's concessions (Fig ALB-3), previous ORG work was concentrated on the Connors and Camel Hill prospects. Preliminary drill testing of the Camel Hill prospect, a copper-in-soils anomaly within the SAZ (Figure ALB-3) that is at least four times larger than the Connors prospect, encountered the following results:

DDH	From ft.	To ft.	Core Length ft.	Gold oz/ton	Copper %
Cam 92-1	40	770	730.	0.006	0.48
including	40	445	415.	0.008	0.63
Cam 92-2	0	585	585.	0.006	0.46
Cam 92-3	10	230	220	0.004	0.36
Cam 92-5	11	505	494.	0.007	0.43
including	170	290	120.	0.010	0.63

Drilling in 1957 found significant copper mineralization at the Connors prospect, with one drill hole reporting an intersection of 184 ft. of 1.51% copper but no gold values were reported. Despite these encouraging results, this area was not drilled again until 1991, when Golden Ring Resources, a Vancouver based Company, optioned the property from Trev Corp (now ORG) and drilled a well defined soil anomaly about 500 ft by 400 ft. with copper values greater than 200ppm and gold values greater than 50ppb. The more significant drill results from the Connors deposit are:

DDH	From ft.	To ft.	Core Length ft.	Gold oz/ton	Copper %
92-1	surface	470.	470.	0.013	0.53
92-2 including	45 210	365 330	320. 120.	0.011 0.018	0.69 0.86
92-3	45	365	320.	0.005	0.46
C-4	70	254	184.	NA	0.91
Con-4	69	362	293.	0.014	0.69

While the results from both areas are encouraging, it is evident that much more work is required to further develop economic reserves. However, there is every reason to believe that other prospects -when combined with these two areas- a very significant tonnage could be developed. ORG's review of in-house data has identified several other areas on the concession that require further work.

GOLD MINE - MAB HILL AREA

Our review of the available data (See Figure ALB-3) shows that a belt of epithermal gold-copper deposits (Gold Mine, Charring Cross, Stanford Hill, Mab Hill, GEO Hill, etc) occur immediately to the west of the known Camel Hill or Southern Alteration Zone ("SAZ"). This belt extends northwesterly, is subparallel to the SAZ and is defined by a +3. km long copper soil geochemical anomaly (Figure ALB-2). The Bellas Gate concessions also protect the Stamford Hill mine from which 200,000 tons grading 5% copper were extracted by the Clarendon Consolidated Mining Company from a vein system reported to be 20 feet wide and continuous from surface to at least 480 feet of depth. At Charing Cross, another showing, 24 surface samples taken at ten foot intervals averaged 9.16% copper and 0.22 oz gold/ton over 1.5 feet.

LUCKY VALLEY - SIMON AREA

While this was also defined by the CIDA program as a priority ONE anomaly, follow up work in

this area has just begun. In 1994-1995, initial prospecting in the Lucky Valley area (Fig. ALB-3) identified a significant copper anomaly covering an area of about 1,000 ft. by 1,200. ft. Stream sediment sampling gave values of 243 ppm copper while chip samples from this area ranged up to 7.62% copper and averaged 2.44% copper at the Diamond (western) area while very old, un-sampled trenches have been noted in the Simon (eastern) area.

OLD WOMAN HILL AREA

The Old Woman Hill area is ranked as the highest of the interpreted target areas based on CIDA's 1988 survey. Initial sampling in 1991 indicated a strong gold anomaly (up to 1690 ppb in heavy mineral concentrates). Nine samples from this area collected in 1994 averaged 3.84% copper and gave gold values up to 0.265 oz/ton. Stream sediments ranged up to 795 ppb.

OTHER TARGETS

Work by BHP-Utah in the Brown's Hall area in the Brown's Hall area identified a new intrusive belt to the east of the Connors or Northern Alteration Zone ("NAZ") with associated trace amounts of copper and strong potassium alteration.

The Company is presently awaiting results from work carried out at the Gold Mine-Mab Hill and Lucky Valley-Simon areas where a total of 600 soil and 300 rock samples were collected in November of 1996. We expect this work to define drillable targets to be tested in 1997.

FUTURE PLANS

The Company is presently awaiting results from work carried out at the Gold Mine-Mab Hill and Lucky Valley-Simon areas, where a total of 600 soil and 300 rock samples were collected in November of 1996. Preliminary assay results show several rock samples with high gold values (up to 3,220 ppb's) as well as numerous copper values in the 0.3% to +1.0% range. Results will be published soon after the reports are available. We expect this work to define drillable targets for testing in 1997.

January 2, 1997
jamsum.971

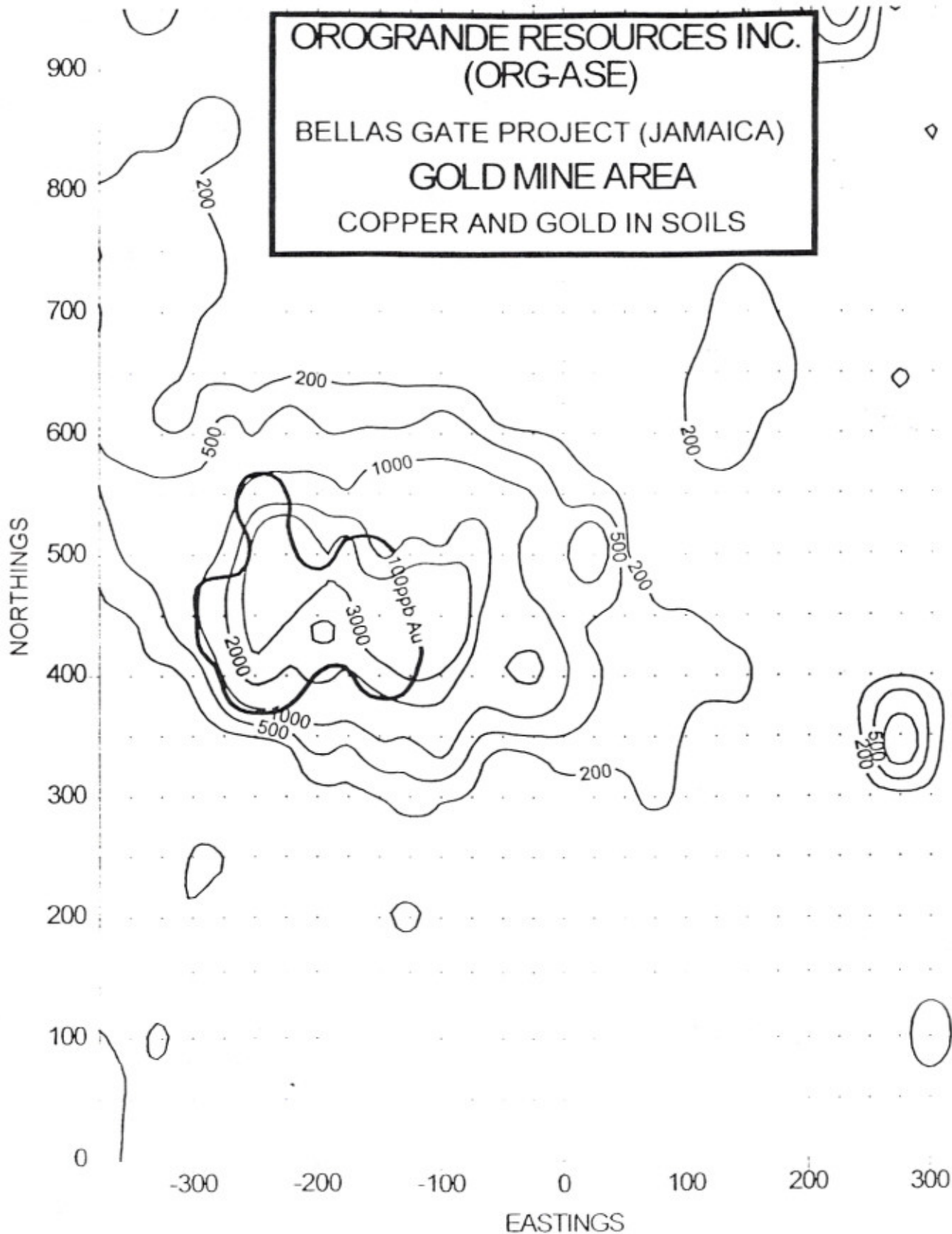
The Alberta Stock Exchange has neither approved nor disapproved of the information contained herein.

OROGRANDE RESOURCES INC.
(ORG-ASE)

BELLAS GATE PROJECT (JAMAICA)

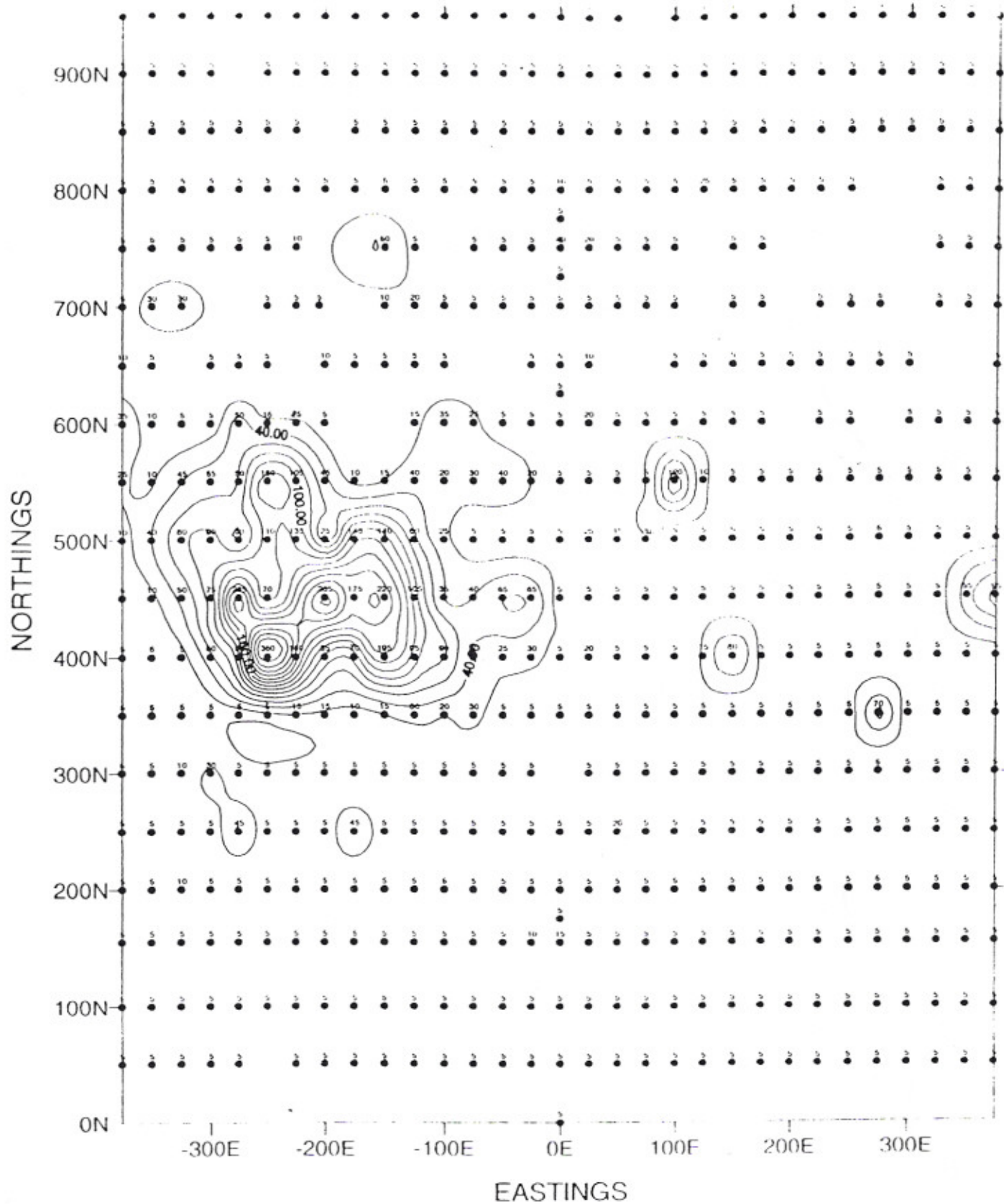
GOLD MINE AREA

COPPER AND GOLD IN SOILS

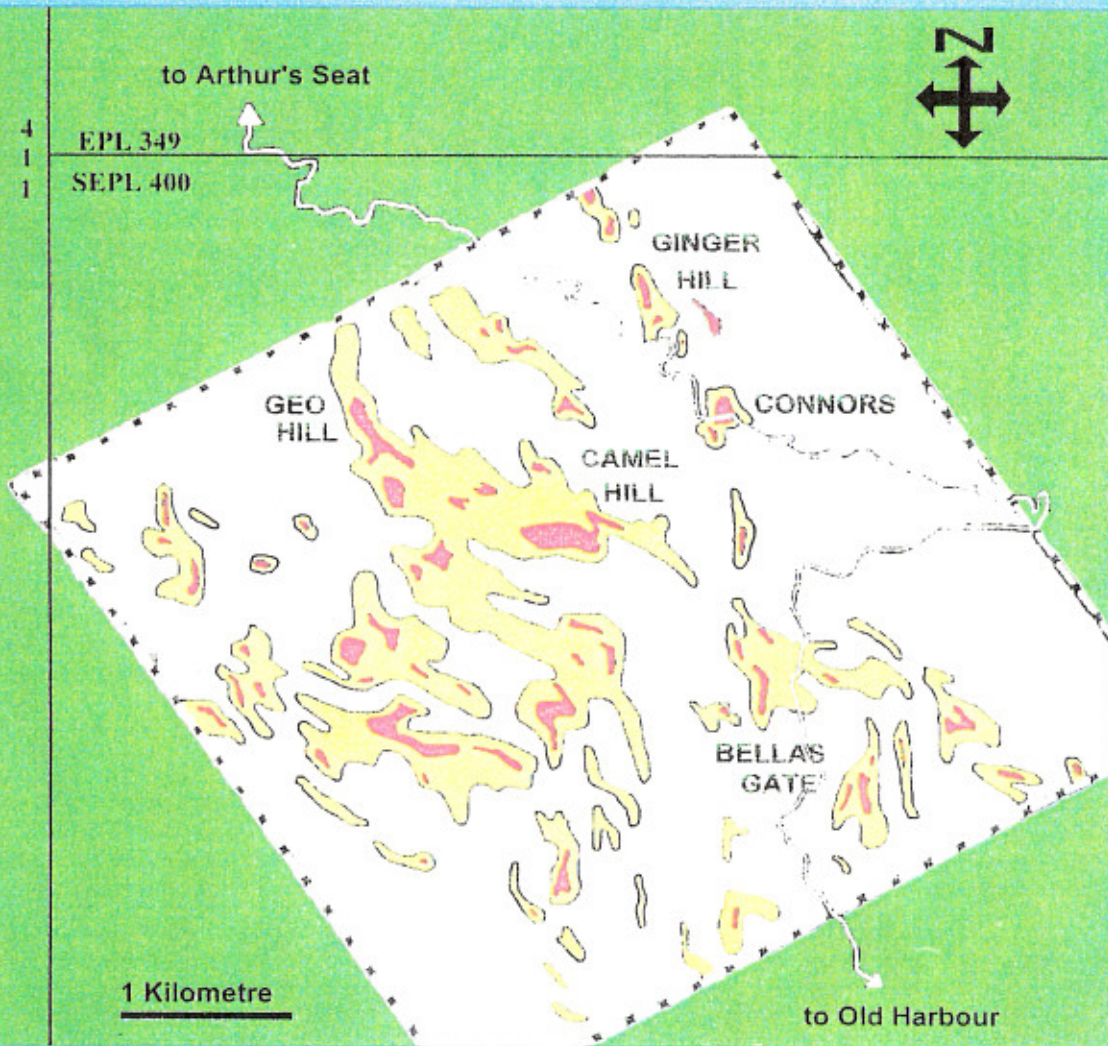


Copper contours: 200,500,1000,2000,3000 ppm.
Gold (+100 ppb) shaded in.





GOLD ppb



BELLAS GATE PROPERTY

JAMAICA

REGIONAL COPPER GEOCHEMISTRY



200 ppm Copper

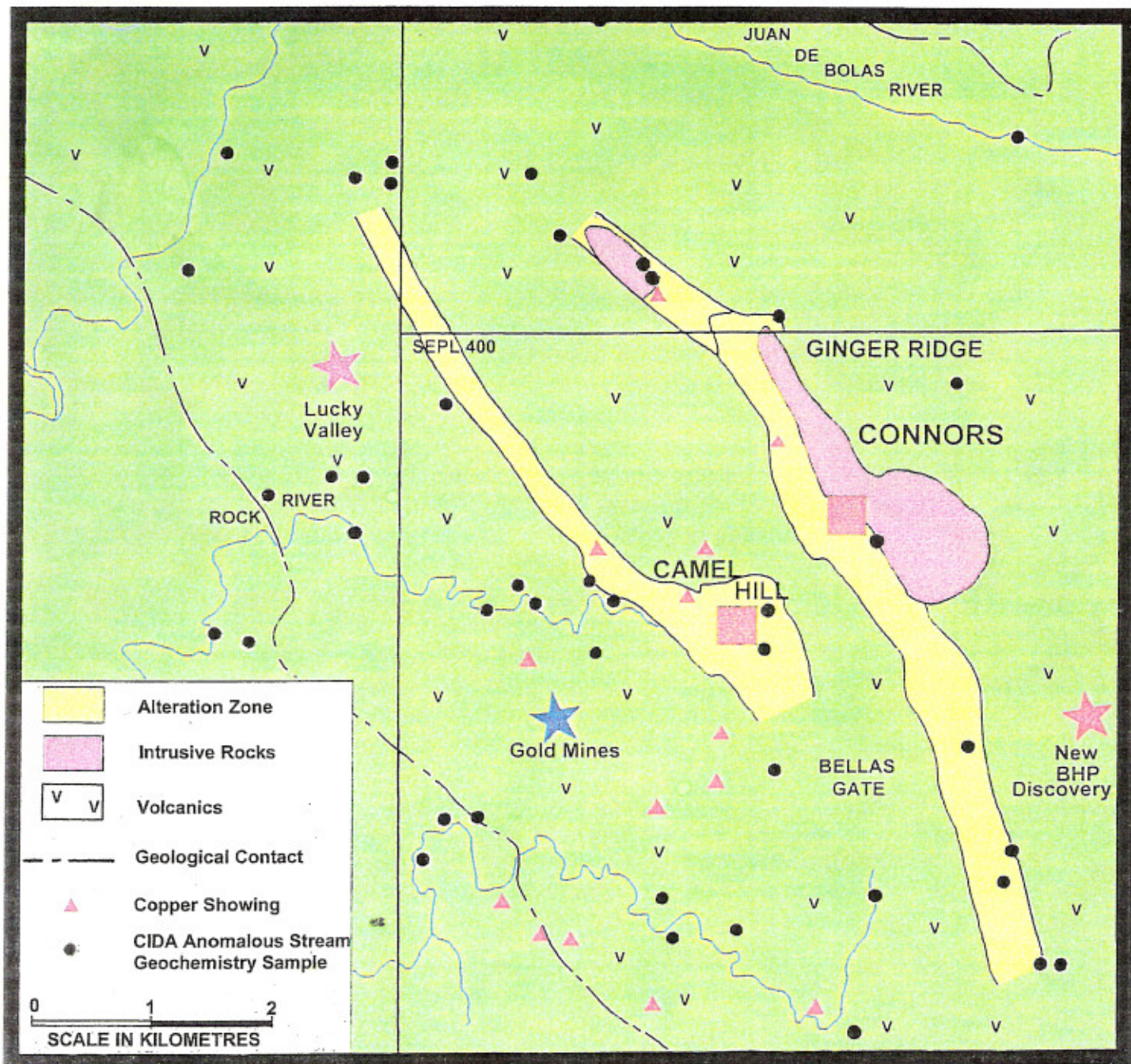
500 ppm Copper

EPL 349

SEPL 411

SEPL 400
Survey Area

Figure ALB-2



GEOLOGY / GEOCHEMICAL ANOMALIES OF THE BELLAS GATE PROPERTY